




SSHA UPDATE

March 19th, 2018



SUCCESS IS WALKING
FROM FAILURE TO
FAILURE WITH NO LOSS
OF ENTHUSIASM.

Winston Churchill

RESOURCES ON CAMPUS

Click on image for more information.



A Resource for Students

UC Merced Food Pantry Distribution
10AM-2PM | Location: Merced Tri-College

February 16th
March 16th
April 20th
May 18th

Sign Up at: <http://studentlife.ucmerced.edu/content/uc-merced-food-pantry>

NEED A RIDE? Want to Volunteer?

For More Information Email: foodpantry@ucmerced.edu



CalFresh (KL 117)

Drop In: Mondays 2:00-5:00 p.m.
Appointment: Thursdays 9:00-12:00 p.m.
Link: <http://heroes.ucmerced.edu>
CalFreshoutreach@ucmerced.edu

UC Merced Food Pantry

Tri-College Center
Third Friday of every month
10:00 a.m. - 2:00 p.m.

Fresh Fruit Wednesdays

SSM 130 & KL 117

iCare

On campus student-to-student
meal assistance

CropMobster

<https://merced.cropmobster.com>

UC Merced Community Garden

Periodic harvests throughout the year.

Pop Up Produce

Offering FREE fresh produce to
students twice a month!
Scholars Lane 10 a.m. - 12 p.m.
Spring 2018 Dates: Feb. 8 & 22,
March 8 & 22, April 12 & April 26

Produce on the Go

Every Tuesday & Wednesday
Location: COB2 Quad
10:00 a.m. - 3:30 p.m.

Community Microwaves

KL 117
SSM 130
Outside the ASUCM Office

Emergency Food Boxes

KL 117 and SSM 130

Merced Produce Map

Locations in Merced where fruits and
vegetables are sold.
Link: <http://heroes.ucmerced.edu>

Merced County Food Bank

Open 7:00 a.m. - 3:00 p.m.

Resource Centers: SSM 130 and KL 117

Emails: basicneeds@ucmerced.edu
foodpantry@ucmerced.edu
heroes@ucmerced.edu



RESOURCES ON CAMPUS

Click on image for more information.



SSHA MAJOR SERIES

A BOBCAT'S GUIDE TO MASTERING YOUR MAJOR



UNIVERSITY OF CALIFORNIA
MERCED
CENTER FOR CAREER &
PROFESSIONAL ADVANCEMENT

COME EXPLORE WHAT YOUR SSHA MAJOR HAS TO OFFER IN ACADEMICS AND POSSIBLE PROFESSIONAL CAREER PATHS!

SNACKS WILL BE PROVIDED

February 22 HIST/ANTH/SOC/CRES
11 AM - 11:50 AM | KL 296

March 6 MBE/ECON/POLI
11 AM - 11:50 AM | KL 296

March 20 PSY/COGS/PH
11 AM - 11:50 AM | KL 296

April 10 ENG/SPAN/GASP/PHIL
11 AM - 11:50 AM | KL 296

If you have any further questions, please contact a SSHA Peer Mentor at sshapeermentor@ucmerced.edu

A poster for Summer Session Workshops designed to look like a spiral-bound notebook. It features logos for the School of Natural Sciences and SSHA Advising, a sun icon, and details about non-UC summer courses and contact information for peer mentors. A speech bubble says "Free swag!!".

Come learn more about the steps to taking summer courses at a CSU or community college!

Summer Session Workshops

Non-UC Summer Courses
March 15 • 11AM-12PM • KL 296
April 19 • 1:30-2:30PM • COB1 279

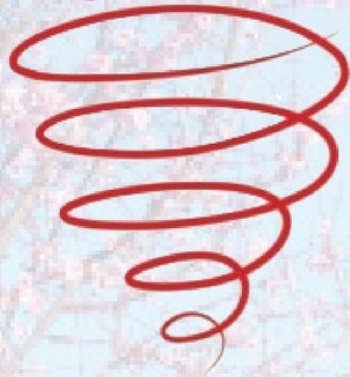
Questions? Contact:
nspeermentor@ucmerced.edu
sshapeermentor@ucmerced.edu

Free swag!!

Jump Start Your Career

Click on image for more information.

Spring Into Action



Tuesday, March 20th, 2018

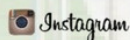
COB 1 282

3:00 PM - 4:00 PM

Come find out how to capitalize your spring break to explore careers, utilize networking, job search and conduct info interviews in your field of interest.

UNIVERSITY OF CALIFORNIA
MERCED
CENTER FOR CAREER &
PROFESSIONAL ADVANCEMENT

FOLLOW US!



@HIREUCMERCED

LIVE WEBINAR

How to Get Your Foot in the Door: Careers in Entertainment, Media & Sports *Strategies for getting your first job*

Wednesday, March 21, 2018

7:00pm EST/4:00pm PST



MODERATORS

Karen Glass, Executive Vice President, Everywhere Studios / former Exec VP, Disney Studios
Mark Francis, Principal and Founder, MARK ONE Sports & Entertainment

This one-hour webinar will advise participants on possible career paths in the vibrant fields of entertainment, media and sports. Webinar hosts Karen Glass and Mark Francis will offer a blueprint for getting your foot in the door, plus techniques for building relationships, knowledge and a resume that will excite companies in these sectors. Plus, a short overview of the Summer Institute at UCLA's Anderson School of Management which provides undergraduates and recent graduates a deep dive into these industries with hands-on learning. Karen and Mark are both industry vets: Karen has 20 years of experience working at the Walt Disney Studios; Mark has worked in both the management side of sports and technology consulting.

IN THIS WEBINAR, YOU'LL LEARN:

- Career path choices in sports and entertainment
- The four key elements critical for success
- How to win a great internship position
- How to utilize your strengths and school accomplishments to your advantage

SPACE LIMITED.

TO REGISTER IN ADVANCE:

https://zoom.us/webinar/register/WN_oADb2OCWRO2AmGik_4Ettw

After registering, you will receive a confirmation email with information about joining the webinar.

This webinar is part of an information series sponsored by the UCLA Anderson School of Management's Center for the Management of Media, Entertainment and Sports (MEMES) which offers a Summer Institute program for undergraduates who aspire to work in these industries. For more information: [Center for MEMES Summer Institute](#)

CENTER for MEMES
MEDIA, ENTERTAINMENT & SPORTS

UCLAAnderson
SCHOOL OF MANAGEMENT

Jump Start Your Career

Click on image for more information.



*Come &
See us
Today!*

UNIVERSITY OF CALIFORNIA
MERCED
CENTER FOR CAREER &
PROFESSIONAL ADVANCEMENT

SSHA Advising Peer Mentors



Annabel Vu | Joselyn Lopez | Amandip Singh
sshapeermentor@ucmerced.edu

The Peer Mentors will provide guidance and insight for a wide variety of subjects including, but not limited to:

- Answering registration questions
- Semester planning
- Understanding Major and Minor requirements
- Reading your audit and MyDegreePath
- Filling out forms
- Knowing important dates and deadlines
- Finding useful and relevant campus resources
- Assisting with the transition from high school to college

SSHA Advising Academic Advisors

Brenda Maldonado-Rosas

bmaldonado-rosas@ucmerced.edu | (209) 228-2366

Armando Contreras

acontreras39@ucmerced.edu | (209) 228-3029

Kou Her

kher9@ucmerced.edu | (209) 228-3028

Click the link to view walk-in hours:

ssha-advising.ucmerced.edu

Click on an icon to stay connected!

